

boatersphone

the mobile reception specialists

07970 459638 / www.boatersphone.com / sales@boatersphone.com

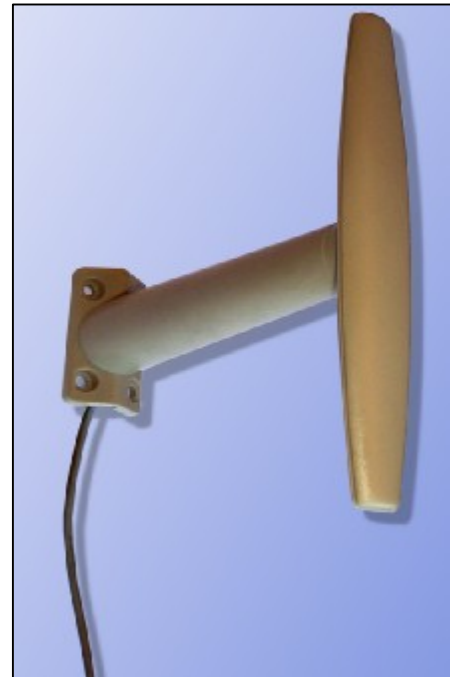
Wall / Pole Mount Antenna

Location

This antenna is ground-plane independent and can be fixed to a building using four screws. The antenna should be placed vertically as shown in the illustration.

Connecting to the Adapter

When connecting the antenna to a phone adapter, push the two connectors together before screwing them tight, so that the centre pin goes all the way in.



Signal Troubleshooting

If you see no improvement in signal you should check the phone adapter is connected to the antenna cable correctly. If this doesn't work try calling out from the handset as this may help you find a signal.

Technical Specifications

Frequencies	900MHz / 1800MHz / 2100MHz
Dimensions (Extremities)	150mm x 150mm x 33mm
Dimensions (Mounting Plate)	53mm x 33mm x 13mm
Cable Attenuation (Per Metre)	900MHz - ≤ 0.28 dB \pm 1800MHz - ≤ 0.43 dB \pm 2100MHz - ≤ 0.47 dB \pm